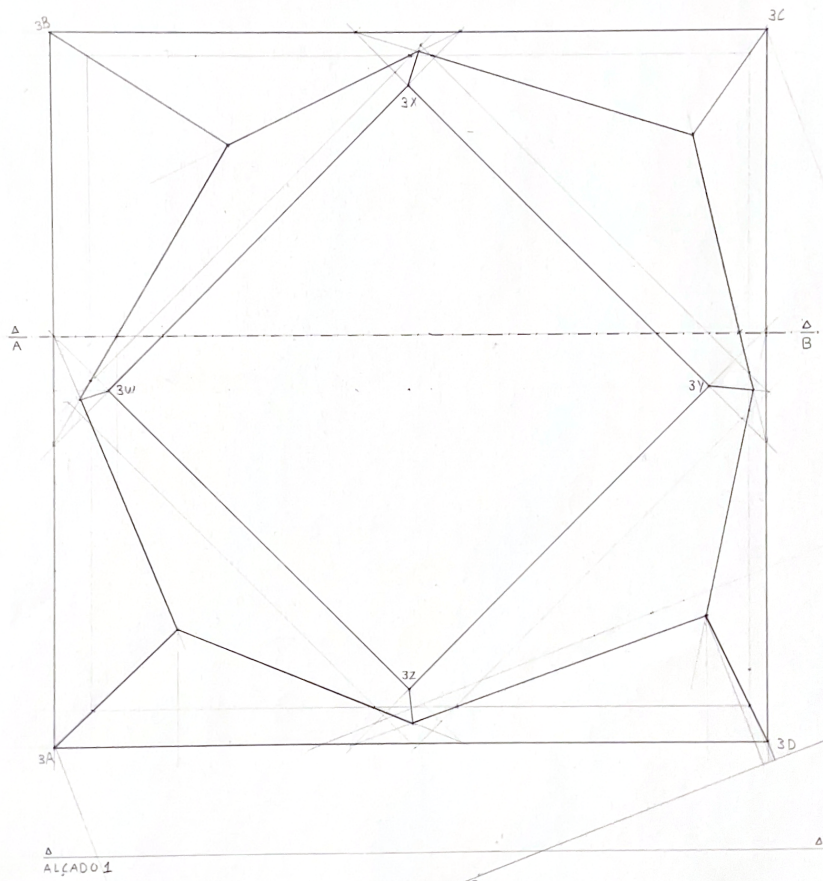


1 un a = 1 m
 Esc 1/100
 Espessura = 0,5 m

AB - 1007
 BC - 1,5
 CD - 2007
 DA - 1
 wx - 2
 xy - 45°
 yz - 0,75
 zw - 1

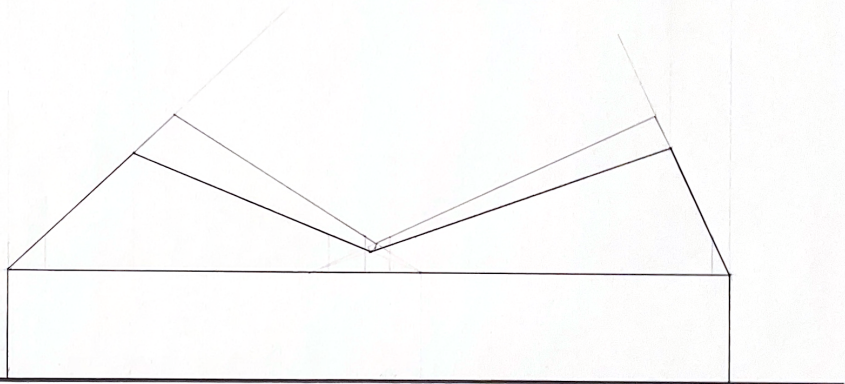
2007,12
 1507,1,3
 1007,1,15°
 757,0,75
 1 un a



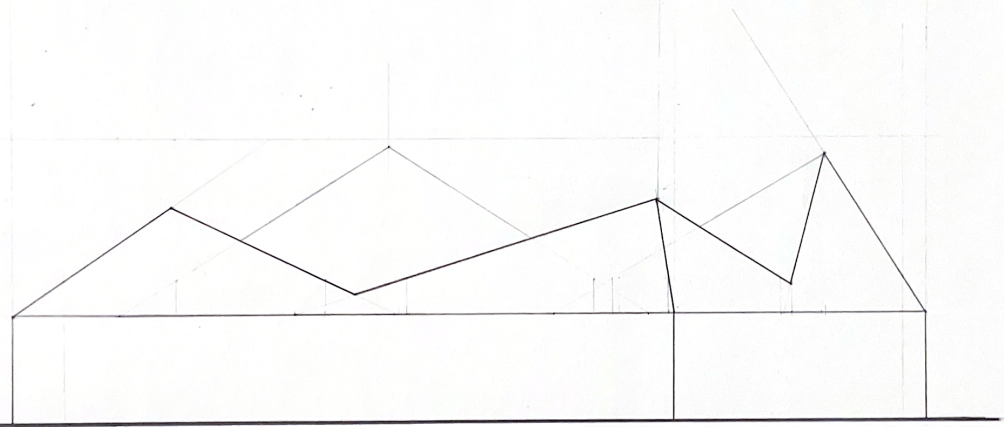
ALCADO 1

ALCADO 2

ALÇADO 1



ALÇADO 2



CORTE AB

